

Zadatak 6.21

Zadano:

$F_1 = 6 \text{ kN},$

$F_2 = 8 \text{ kN},$

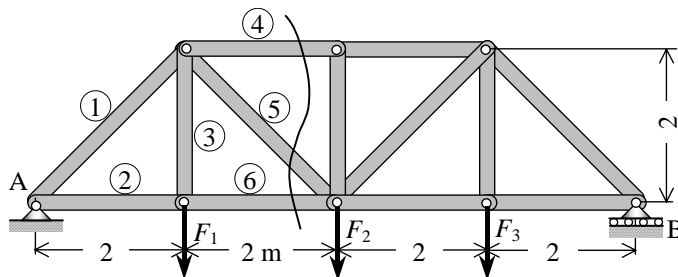
$F_3 = 2 \text{ kN}.$

Rješenje:

$S_4 = -12 \text{ kN},$

$S_5 = 4,24 \text{ kN},$

$S_6 = 9 \text{ kN}.$



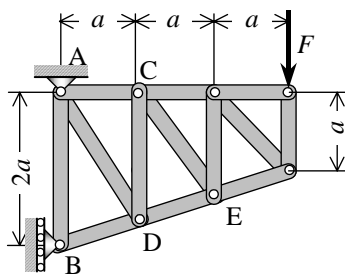
Slika uz zadatak 6.21

Zadatak 6.22Zadano: $F, a.$ **Rješenje:**

$S_{AC} = 2,2F,$

$S_{CD} = -0,6F,$

$S_{CE} = 0,75F.$



Slika uz zadatak 6.22

Zadatak 6.23

Zadano:

$G = 12,75 \text{ kN},$

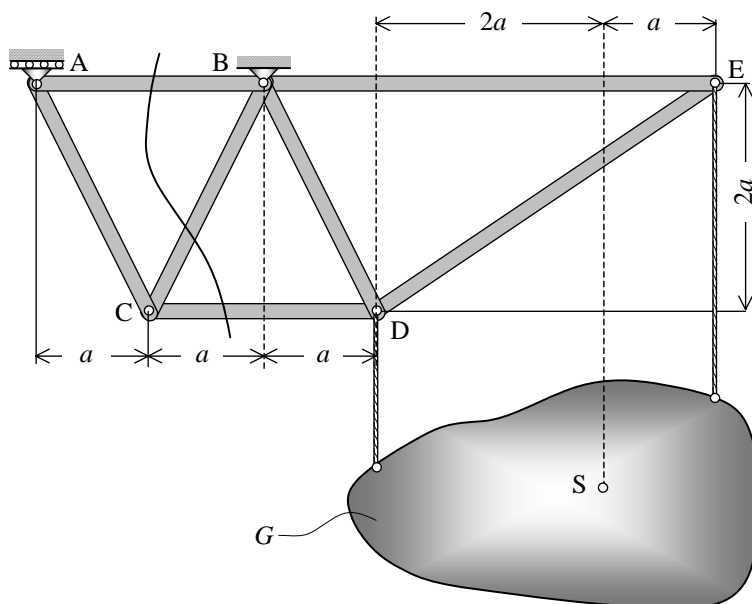
$a = 0,5 \text{ m}.$

Rješenje:

$S_{AB} = 9,5625 \text{ kN},$

$S_{BC} = -21,382 \text{ kN},$

$S_{CD} = -19,125 \text{ kN}.$



Slika uz zadatak 6.23